

silco[®]

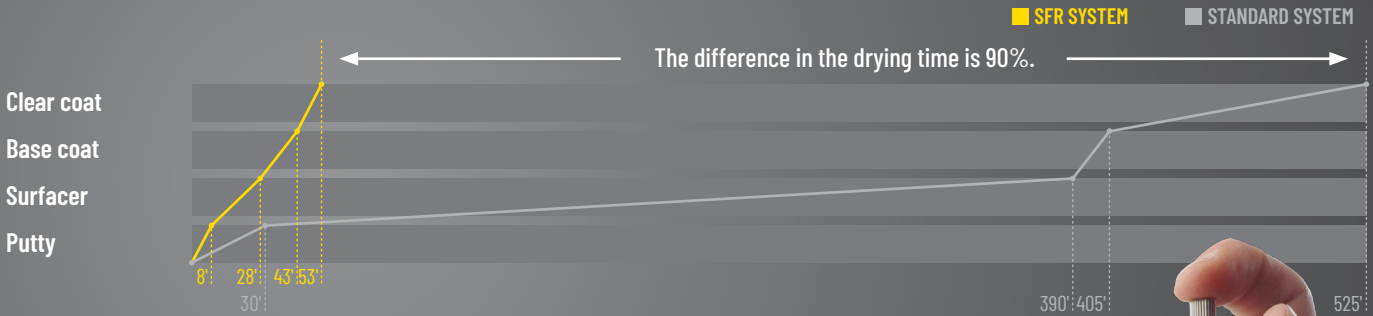


**Get the productivity
of 3 spray booths
from just one.**

DISCOVER SFR PRODUCTS



Key to key in less than 60 minutes!



Could you imagine the delivery of a repaired car in less than 60 minutes?
With Silco Fast Refinish products you can get the productivity of 3 spray booths from just one.



Time saving

The main feature is drying time, which allows you to do a job up to 90% quicker.



Increased productivity

SFR line offers product features designed to elevate your efficiency up to 30%.



Energy saving

With shorter curing times you significantly reduce required energy for booth.



Higher earnings

More jobs done in less time than with the standard system leads to higher earnings.



Unlike others fast drying materials, which are limited to small (spot) repairs, the SFR products ensure more working time, due to their exceptionally long pot-life.

The flexibility of the SFR allows body shops to save time, resources, and energy without compromising on performance or usability.

How much do you **gain**?

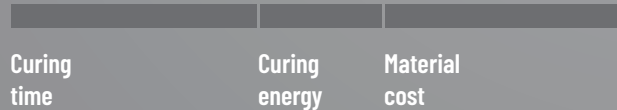
SFR line offers product features designed to elevate your efficiency.

SFR System >



-30%

Standard System >



Get the productivity of
3 spray booths from just one.

**Additional time savings apply when using 2k aerosols.*

6110 B11 SFR Superfast

Fast, soft, semi-lightweight putty

- ready to sand in 8 minutes from application
- excellent adhesion to galvanized and electrozinc-coated metals, aluminium and steel surfaces

6600 SFR Air-Bond

Fast, soft, light putty-bodyfiller

- ready to sand in 12 minutes from application
- excellent adhesion to galvanized and electrozinc-coated metals, aluminium and steel surfaces

7120 M12 SFR Superfast

HS ultra rapid surfacer

- Dry to sand:
 - / 20°C = 15 min
 - / 60°C or IR = 5 min
- Pot-life: 35 min

SHORTER PREPARATION TIME

Extra-fast drying time.

LIGHT WEIGHT

Fill dents with less product (by weight) in comparison with other putties.

INCREASED PRODUCTIVITY

Great product to increase turnaround in the booth.

7300 M30 Superfast Primer

2K high build primer filler spray

- Dry to sand:
 - / 20°C = 15 min
 - / 60°C or IR = 5 min
- Pot-life: min. 30 days

9600 SFR X-Cure

UHS 420 ultra rapid clear coat

- Dry to polish:
 - / 20°C = 50–60 min
 - / 60°C = 3–5 min
- Pot-life: 60 min
- hardener (vol. 1:1; 9650, 9670), no thinner needed

9006 SFR X-Cure Spray

2K ultra rapid clear coat

- Dry to polish:
 - / 20°C = 90 min
 - / 60°C or IR = 7–9 min
- Pot-life: min. 8 h

SHORTER PREPARATION TIME

No mixing and no spray gun washing needed.

PERFECT FOR ELECTRIC CARS

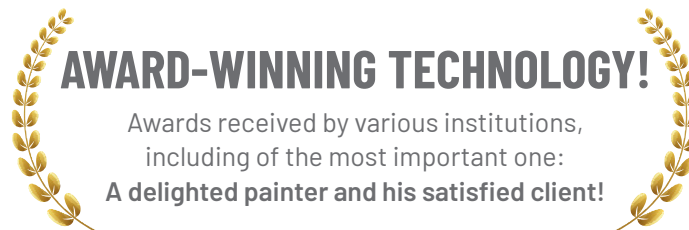
Can be used on an electric cars, which have heat-sensitive batteries.

GREAT END-RESULT

Achieve great end-result on smaller surfaces.

YOU ARE NOT LIMITED TO JUST SPOT REPAIRS.

By using SFR products you are not limited to just spot repairs although with their exceptional drying speed, larger surfaces can easily be repaired due the exceptionally long pot-life.



AWARD-WINNING TECHNOLOGY!

Awards received by various institutions,
including of the most important one:
A delighted painter and his satisfied client!

Distributor:

